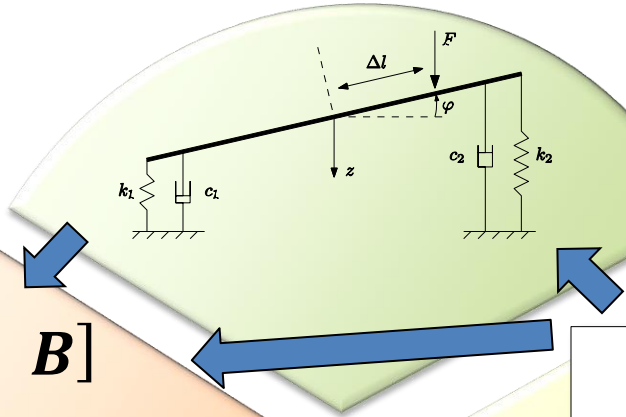


StratiGraph and Matrix Canonical Structure Toolbox

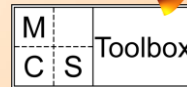
Represent as a system pencil



Adjust model/parameters?

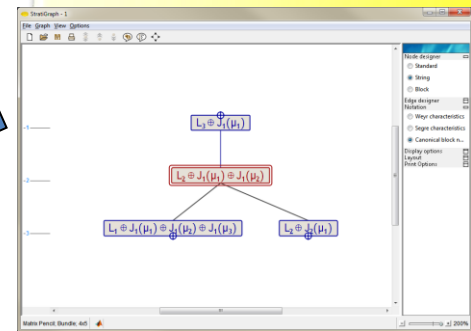
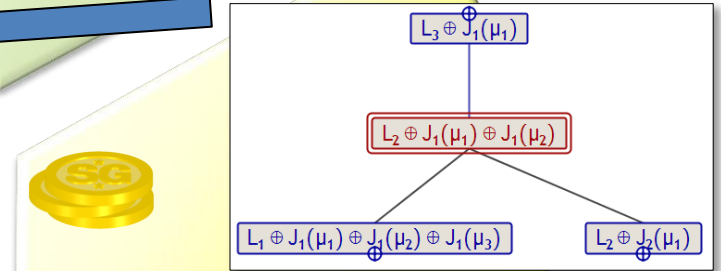
$$[A - \lambda I \quad B]$$

Compute canonical structure information



$$L_2 \oplus J_1(\mu_1) \oplus J_1(\mu_2)$$

Send to StratiGraph



Explore and Analyze